

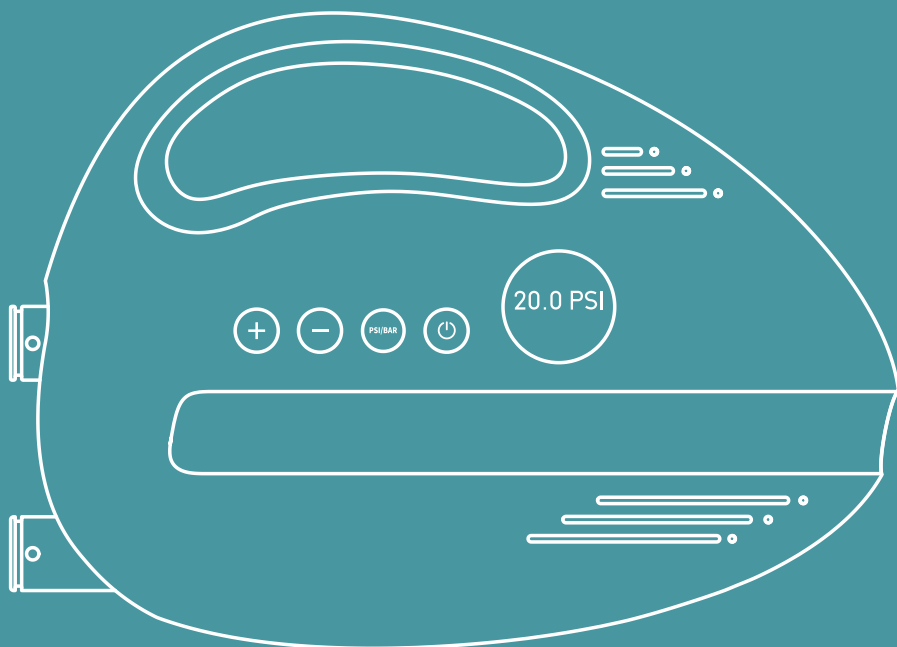


AQUA MARINA

TURBO

EP-T20

Electric Pump Instructions



20PSI
INFLATES UP TO

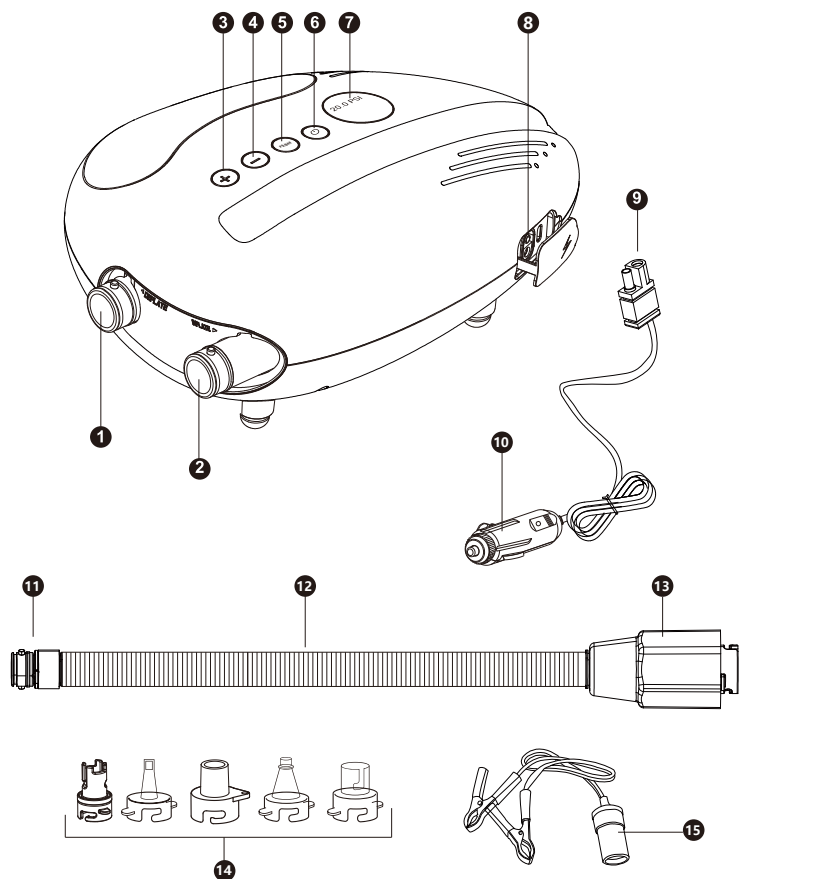


Please read the operation instructions carefully before using this product.



Save your energy for the water! Our ultra compact TURBO electric pump is easy to carry on the go to inflate with ease.

TURBO (EP-T20) is a smart DC electric air pump that can be used for most inflatable products such as inflatable SUP boards, kayaks, canoes, speed boats, etc. It has a smart LED display and an intelligent pressure control system that presets a target pressure value and automatically shuts off when the pressure reaches the preset target pressure value. The pump also provides an air deflation function to empty the air for easy folding and storing the inflatable products after use.



- | | | |
|---------------------------------|-------------------------|----------------------------------|
| ① Deflation Port | ⑥ Power Switch | ⑪ Hose to Pump Connection Side |
| ② Inflation Port | ⑦ Display Screen | ⑫ Hose |
| ③ Pressure Pre-setting Up (+) | ⑧ Power Socket | ⑬ Hose to Nozzle Connection Side |
| ④ Pressure Pre-setting Down (-) | ⑨ Power Plug | ⑭ Nozzles |
| ⑤ Unit Selection (PSI/BAR) | ⑩ Cigarette Socket Plug | ⑮ Battery Clamp |

WARNING

1. To reduce the risk of injury, do not allow children to use it. Children and those who are incapacitated are frequently monitored. Children must be kept away from the product and the cord.
2. This product is not intended for persons with physical, sensory or mental disabilities, or persons lacking skills or mental disabilities, unless their safety is protected and supervised and directed by a guardian.
3. To remove, maintain, repair, or adjust this product, unplug it from the socket.
4. Do not bury the wires in the soil. Keep them in a safe place where they will not be damaged by lawn mowers or other equipment.
5. If the power cord is damaged, it must be replaced by the manufacturer or its service agent or similar authorized personnel to avoid danger.
6. Do not unplug if you are standing in water or your hands are wet.
7. Please check the maximum atmospheric pressure of the inflatable product before inflating. Exceeding the maximum allowable pressure can damage the airbag.
8. Please check the cigarette lighter socket before use to ensure that there is no rust or residue inside. Poor electrical conductivity cigarette lighter socket may cause the product or power to overheat and damage the product.
9. The purpose of using the product is limited to those described in the instructions.

SAFETY PRECAUTION

1. The power supply must be 12V DC power.
2. Do not block the inflation port and deflation port. Make sure the inflation port and deflation port are unobstructed at all times.
3. Comply with local garbage disposal regulations and do not dispose of air pumps at will. When the hose is damaged, do not operate this product, please replace the hose immediately.
4. Do not remove the hose while inflating. High air pressure may harm the body.
5. Do not keep the air pump working for more than 30 minutes.
6. Motor overheating may cause internal damage. Please fully cool for 20-30 minutes after continuous operation for more than 30 minutes.
7. If any components are damaged, please do not use this pump. Please contact a professional for repair.
8. This product shall not be exposed to rain or water.
9. To avoid danger, the pump outlet or hose should not be aimed at the face or the body while the pump is working.
10. Please do not leave while inflating or deflating.
11. During the use of the product, please keep the vehicle ignition on to avoid unnecessary damage.

INFLATION OPERATION

1. Select a suitable nozzle and screw it onto the hose. (FIG1)
2. Place a suitable washer with the groove facing out. (FIG2)
3. Put the end ⑬ of the hose into the air nozzle matching the airbag, turn clockwise and tighten it, then insert the air charging valve of the airbag, and fix it by turning clockwise. (FIG3)
4. Connect the other end ⑪ of the hose to the air pump inflation port and tighten it clockwise. (FIG4)
5. Insert the car plug into a 12V DC socket. (FIG5)
6. Press the pressure unit switch button "PSI / BAR" to select the unit you want.
7. Press the Pressurization button "+" or the pressure relieves button "-" to set the target pressure you want, which ranges from 0 to 20PSI (1PSI=0.0689BAR=6.89KPA). (FIG6)
8. After completing the above steps, press the power switch button to start inflating. (FIG7)

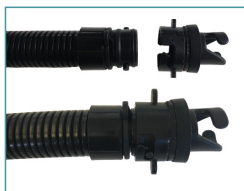


FIG1



FIG2



FIG3



FIG4



FIG5



FIG6



FIG7

9. During inflation, the target pressure value can be increased or decreased by pressing the pressurization button "+" or the pressure relieves button "-"; the pressure unit switch button "PSI / BAR" can be pressed to change the unit, but will cause the pump to cease inflation to avoid over inflation by misoperation. Press the On / Off power switch to restart the inflation after you confirm the target pressure.

10. When the pressure reaches the pre-set value, the air pump will automatically stop working.
11. After inflating, pull the plug off from the 12V DC socket.
12. When not in use, remove the hose from the air pump and airbag and store it.
13. The pump will work in 2 stages. Stage 1 for fast air flow air pump unit for low-pressure inflation, and when the smart pressure control system detects that the pressure of stage 1 is not increasing, it will automatically switch to stage 2 with a high-pressure compressor until the pressure reaches the target value.

Note: The air pump has a memory of the last pressure value used. The pressure value for the next use will display the pressure value set last time by default.

Note: After the air pump is turned on and not running for 2 minutes, it will enter standby mode. You can press any button to activate the system.

DEFLATION OPERATION

1. Remove the hose from the inflation port, then connect one end of the hose with the air pump outlet and tighten it clockwise (FIG8). The other end is still connected to the airbag.
2. Press the power switch button of the air pump to start venting until all the gas is discharged, then turn off the power and stop venting.

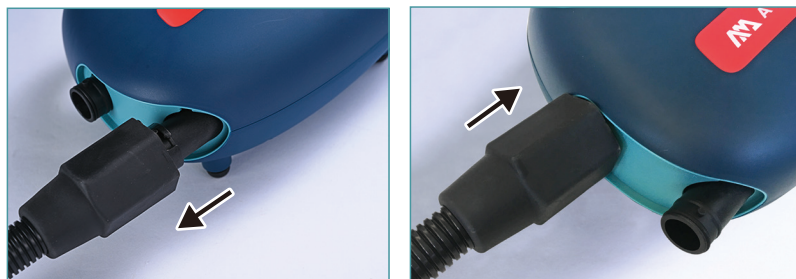


FIG8

MAINTENANCE AND STORAGE

1. After use, or before moving, repairing, or adjusting the product, unplug it from the socket.
2. When not in use, please cool it thoroughly and put it in the box.
3. Please use it indoors and not under direct sunlight or rain.
4. Please store in a dry and ventilated place.

TROUBLE SHOOTING

Fault	Inspection	Solution
The Air Pump cannot be started normally.	The power source is not plugged in properly.	Make sure that the power cable is in the 12V DC socket.
	The fuse in the DC plug is faulty or worn out.	Change the fuse.
	Overheating or overload causes the motor to cease.	Allow the motor to cool down and restart the pump.
	/	If the problem persists, please contact the manufacturer or an authorized technician for immediate repair.
Slow or abnormal inflation.	Check whether the hose is blocked or damaged in any way.	Remove any blockages from the hose, or replace them if damaged.
	The connection between the hose / Air Pump/inflation valve is not secure.	Pause the inflation, check all connections are secure, and reinstall if necessary.
	/	If the problem persists, please contact the manufacturer or an authorized technician for immediate repair.

WARRANTY

AM warrants this product to be free from major defects in material or workmanship to the original purchaser for below specified period from the date of purchase. This warranty is subject to the following limitations:

- **This product has a limited TWELVE (12) months warranty.**

1. AM will make the final warranty determination, which may require inspection and/or photos of the equipment, which clearly show the defect(s). If necessary, this information must be sent to the AM distributor in your country with prepaid postage. Product can be returned only if a return authorization number is given in advance by the AM distributor. The return authorization number must be clearly labelled on the outside of the package, or it will be refused.
2. If a product is deemed to be defective by AM, the warranty covers the repair or replacement of the defective product only. AM will not be responsible for any costs, losses, or damages incurred as a result of loss or misuse of this product.
3. This warranty does not cover damage caused by misuse, abuse, neglect, normal wear and tear including, but not limited to, punctures, damage due to excessive heat exposure, damage caused by improper handling and storage, or damage caused by anything other than defects in material and workmanship.
4. This warranty is void if any unauthorized repair, change or modification has been made to any part of the equipment.
5. The warranty for any repaired or replacement equipment is good from the date of the original purchase only.
6. The original purchase receipt must accompany all warranty claims. The name of the retailer and date of purchase must be clear and legible.
7. There are no warranties that extend beyond the warranty specified here in.



WARNING

This product is designed in accordance with standards for a specific use. Any modifications or transformations higher than that indicated by the manufacturer could result in serious risks for the user and will void the warranty.



AQUA MARINA

© **Oriental Recreational Products (Shanghai) Co., Ltd**

®™Trademarks used in some countries of the world under license to / ®™marques utilisées sous licence de /
Marcas registradas utilizadas en algunos países del mundo bajo licencia de / Das®™ Warenzeichen wird in
einigen Ländern der Welt unter der Lizenz davon benützt Oriental Recreational Products (Shanghai) Co.,
Ltd., No.1699, Daye Road, Shanghai, China 201402 • Represented in the European Union by / Représenté
dans l'Union européenne par / Innerhalb der Europäischen Union vertreten durch / Representado en la Unión
Europea por ORPC SAS 250bis bd Saint-Germain 75007 Paris - France • Represented in the UK by /
Représenté au Royaume-Uni par / Innerhalb des Vereinigten Königreichs vertreten durch / Representado en
Reino Unido por QATC (Europe) Ltd. 12 Eldon Way, Hockley, Essex, SS5 4AD, UK